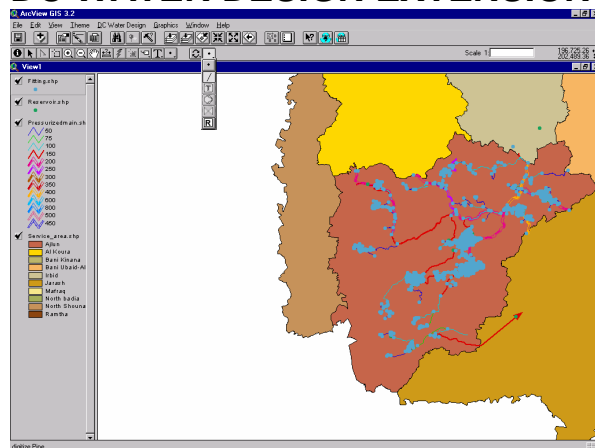


Water network digitizing and hydraulic analysis for ArcView GIS

DC WATER DESIGN EXTENSION



DC WATER DESIGN EXTENSION is the free ArcView 3.x solution for network editing and hydraulic analysis with EPANET developed by DORSCH CONSULT.

Application

DC WATER DESIGN EXTENSION is used to edit and analyze hydraulic analysis models in ArcView. The extension allows to create full EPANET hydraulic analysis models from GIS data. The hydraulic analysis can be run from EPANET or directly from ArcView. Analysis results can be imported to ArcView for further analysis/map printing.

Profile

Easy to use

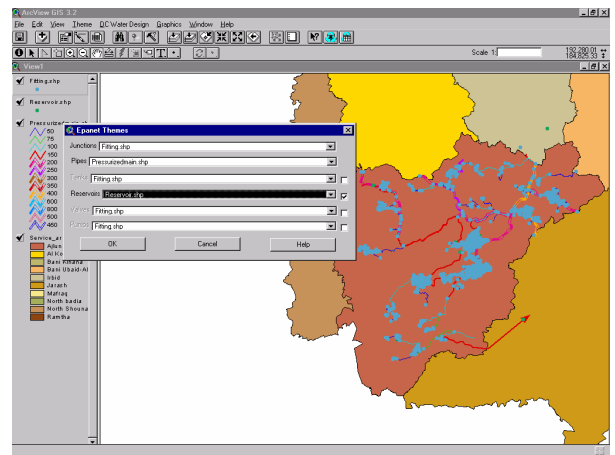
- Completely integrated in the ArcView environment
- Comprehensive PDF manual
- Sample data available on website

Flexible

- Internationalized, Arabic, French, German, Russian and English interfaces are available, other languages can be added easily.
- Open Source: Full source code is available; easy to extend
- Customizable map display

Cost-effective

- Build on Open Source software: EPANET
- Freely available from the internet
- Low hardware requirements



Powerful

- Full hydraulic analysis model is editable in ArcView
- Quality control functions
- Result import
- Network traces
- Flexible field mapping
- Context-sensitive snapping
- Virtual Lines and Bytecodes

Popular

- The DC Water Design extension has been downloaded more than 8,000 times from the internet

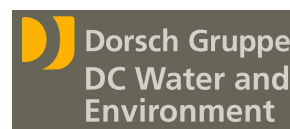
DC WATER DESIGN EXTENSION

Free software released under the Lesser GNU Public license (LGPL).

More information is available on the DC WATER DESIGN EXTENSION website:

<http://dcwaterdesign.sourceforge.net>

Author and distributor:



P.O. Box 941308

Amman 11194

Jordan

Telephone: +962-(6) 585 1136

Telefax: +962-(6) 582 4875

Web: www.dorsch.de

Email: dc_jordan@dorsch.com.jo